

# Case Study

Scottish Gas HQ, Edinburgh

**HCP**

Electric Trench Heating

## Electric Trench & Radiant heating solutions for Scottish Gas' HQ

Scottish Gas, Part of British Gas Residential Energy, is the largest supplier of gas and one of the largest suppliers of electricity to domestic customers in the UK.

In 2003, the company moved over 1,000 employees into a new four story development on the site of a former gasworks in the heart of Edinburgh. The 10,500m<sup>2</sup> building was designed to accommodate the company's call centre with a high-density layout at 6m<sup>2</sup> per person.

Alongside ensuring adequate light and ventilation, Scottish Gas wanted to ensure the occupants of the building felt a sense of space and the building was energy efficient. This was partly achieved by specifying energy efficient space-saving electric trench heating around the perimeter of the building. By removing a traditional radiator system from the each of the buildings floor plates, the actually area of the floor available for use and the sense of space was increased significantly.

HCP designed and manufactured over 1KM of Electric Trench Heating units in 1500mm modules to fit in with the building's planning grid. Each unit contained a high temperature safety cut-out switch and an in-built temperature thermostat. Because of this, Scottish Gas or any future tenant, future requirements to install partitioning or office space could be easily be met.

Continuing the drive for a sense of space and energy efficiency, Electric Radiant Heating panels were specified in the staff restaurant and reception areas. HCP manufactured both with a stainless steel finish due to the high footfall experienced in the reception area and the rigorous cleaning regime in the restaurant area.

Because of the nature of the development and the client's drive to specify energy efficient materials, the project achieved a BREEAM rating of excellent for its low environmental impact.

**Project Name:** Scottish Gas HQ, Edinburgh

**M&E Consultant:** Battle McCarthy Ltd

**Architect:** Foster & Partners

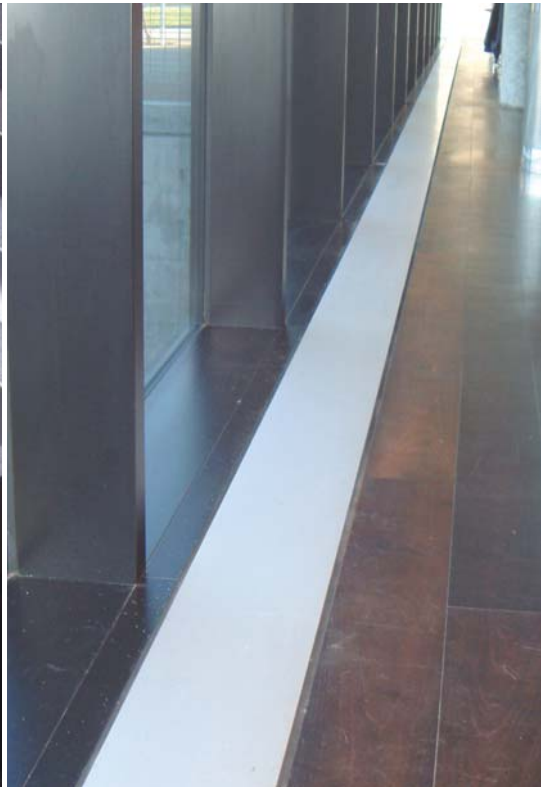
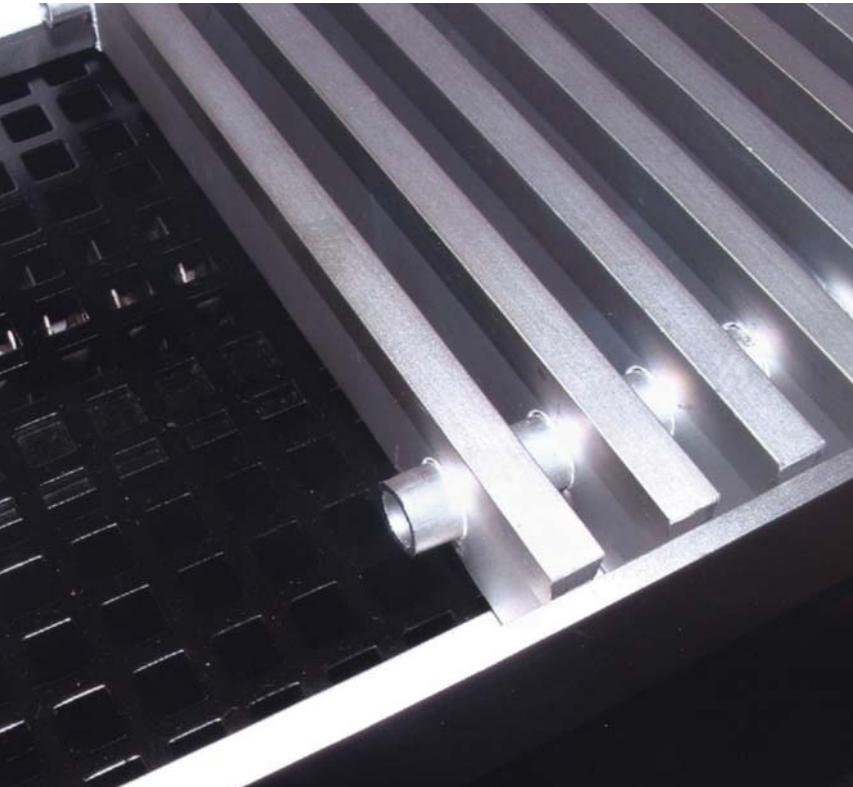
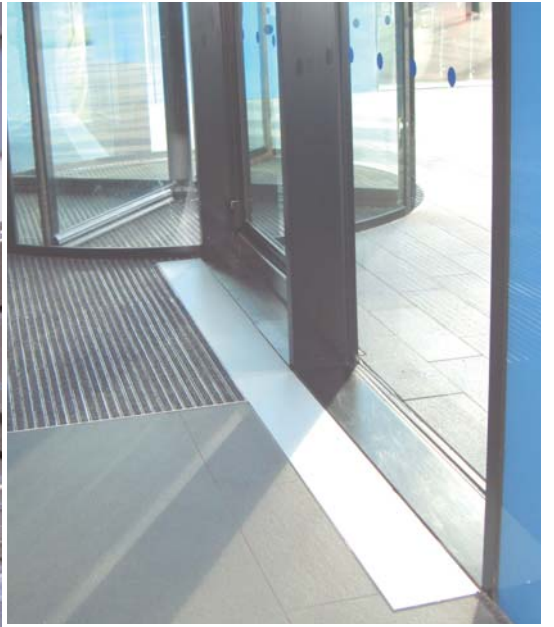
**System Type:** Electric Trench & Radiant Heating

**Special Requirements:** Raised bracket due to deep floor void & stainless steel panel for high use areas

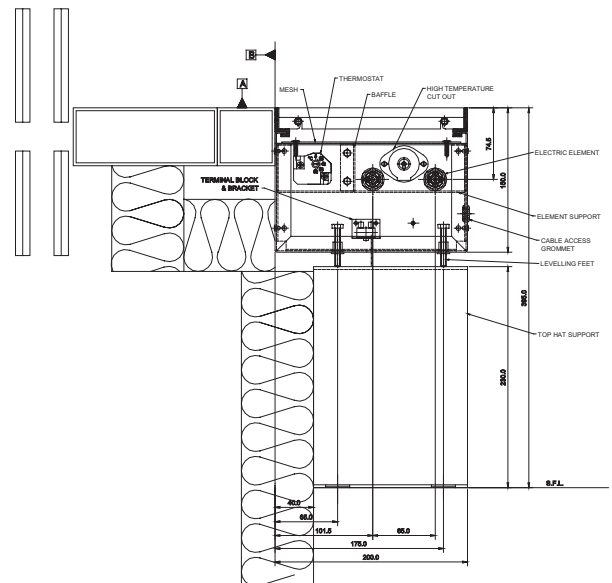
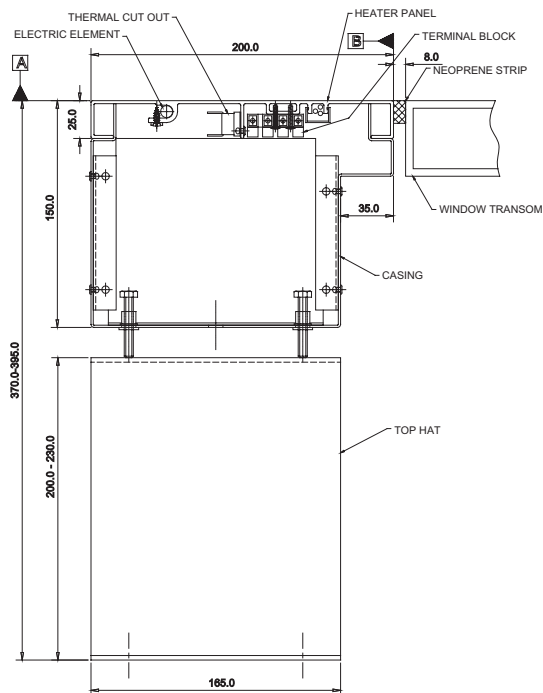
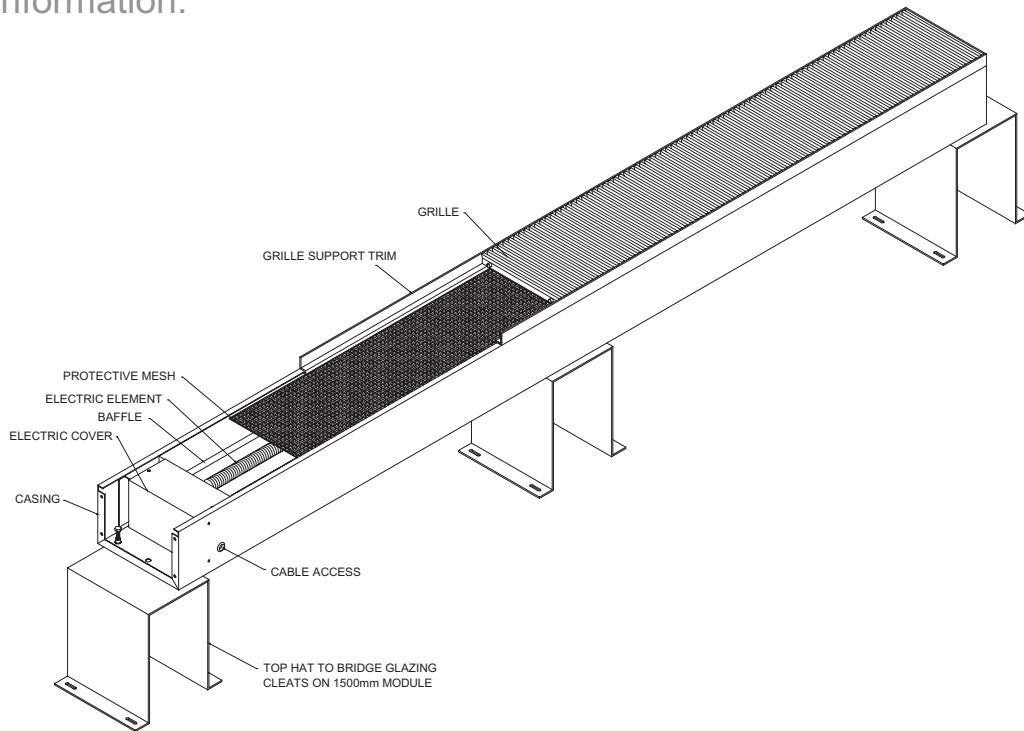
**Area m<sup>2</sup>:** 10,500m<sup>2</sup>

**Location:** Edinburgh

**Completion Year:** 2004



# Technical Information:



HCP (a division of SAS International)  
 Chichester Road, St Leonards on Sea, East Sussex TN38 9BG  
 Tel: 01424 712195 Fax: 01424 457331 info@hcp-sasint.co.uk www.hcp-sasint.co.uk