



Case Study

SAS International, Apollo Park, Oldbury

HCP

Radiant Heating

SAS International, Apollo Park

Radiant Heating Panels for SAS International, Apollo Park Offices

When SAS International, manufacturer of metal ceilings, room comfort and architectural metalwork products, relocated and expanded its West Midlands facilities, a Radiant Heating solution from HCP was insisted upon.

SAS opened its first manufacturing facility at Kelvin Way Trading Estate in West Bromwich in December 1980 and over the intervening quarter of a century the operation grew to encompass nine units on the estate. Due to a serious lack of space and occasional power shortages at Kelvin Way, a new dedicated SAS factory was designed and built on the Apollo Park development in Oldbury, West Midlands.

Covering 90,000 sq. ft. (8,361 m²) the factory provides a new purpose-built home for the SAS employees, whilst offering room for future expansion. Ceiling mounted Radiant Heating Panels from HCP were specified for the office, reception, canteen and showroom areas of the factory to provide excellent room comfort conditions to both employees and visitors. The HCP Radiant Heating Panels were installed in conjunction with a SAS Radiant Chilled Ceiling making it one of the most energy efficient buildings to heat and cool in the area.

The choice of ceiling mounted Radiant Heating Panels avoided the need for radiators at low levels, which freed up valuable floor area and resulted in increased space flexibility. HCP Radiant Heating Panels contain approximately one seventh the amount of water in a traditional radiator system, which can result in a reduction in plant size and energy consumption.

The lack of moving parts in Radiant Heating systems leads to minimal maintenance requirements and a polyester powder paint finish makes the panels extremely easy to clean. With a product life cycle of 25 years, the reduced operating and maintenance costs lead to low whole-life costs. This is an increasingly important consideration as energy prices rise and companies strive to reduce their carbon emissions.

A final factor in the choice of Radiant Heating Panels was the construction materials; Radiant Heating Panels are manufactured from copper and aluminium, leading to a robust product which is 100% recyclable at end of life.

Project Name: SAS International, Apollo Park

Client: SAS International

Architect: Seymour Harris Partnership

Main Contractor: Alfred McAlpine Construction

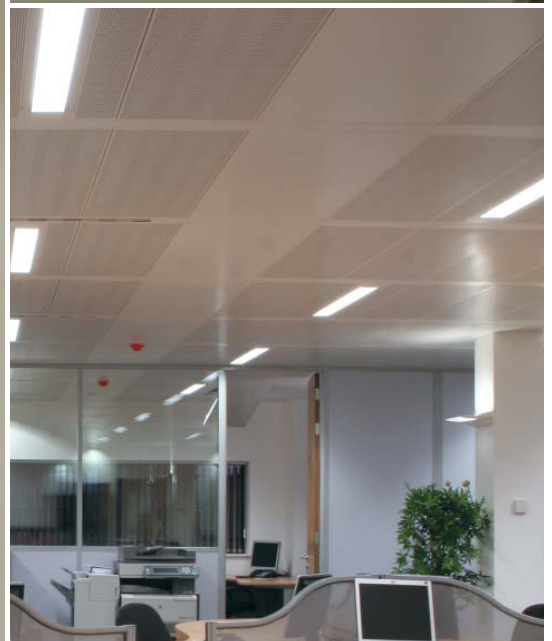
System Type: HCP Radiant Ceiling Tiles

Special Requirements: Installed Energy Efficiency,
with a Chilled Ceiling

Length: 83 linear meters

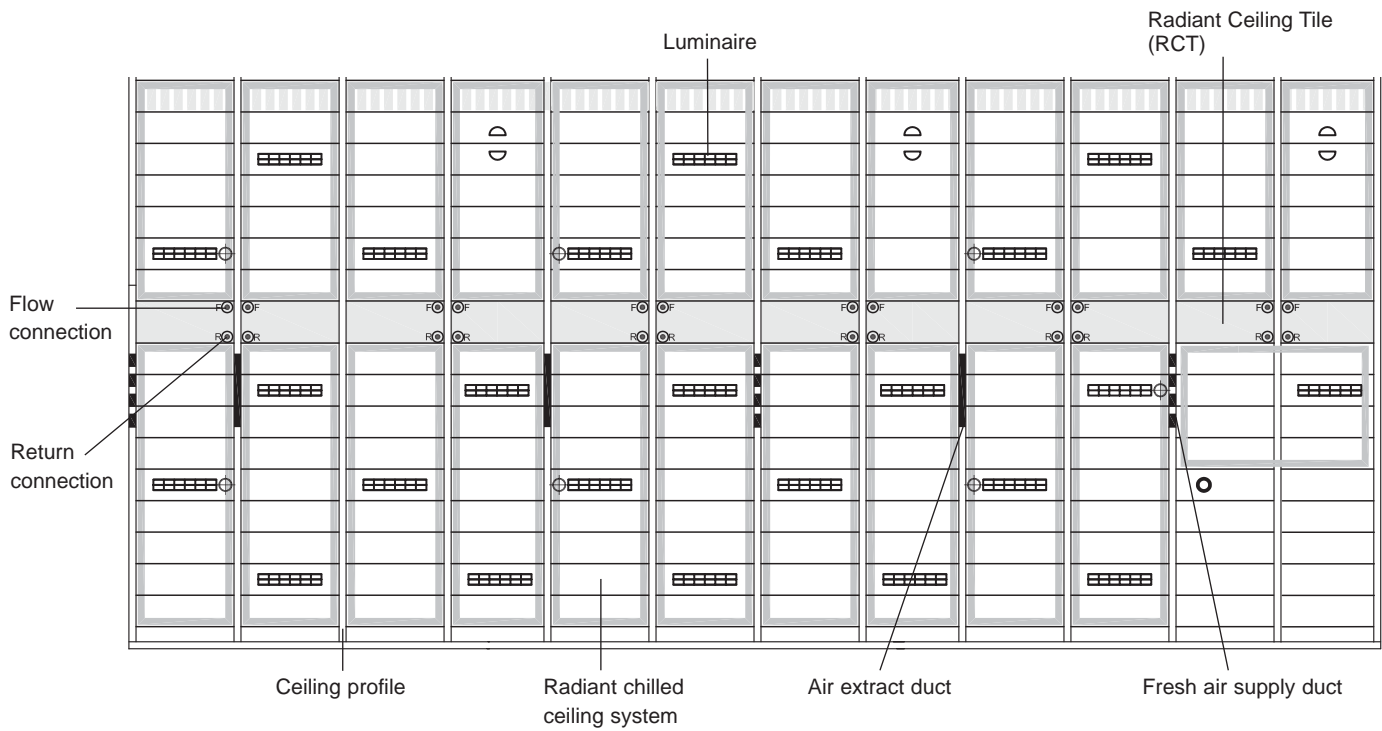
Location: Oldbury, Birmingham

Completion Year: 2007

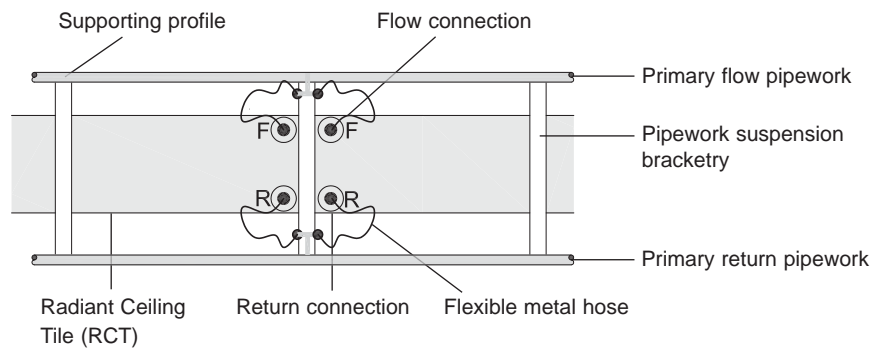


Technical Information:

Plan view



Detail drawing



HCP (a division of SAS International)
 Chichester Road, St Leonards on Sea, East Sussex TN38 9BG
 Tel: 01424 712195 Fax: 01424 457331 info@hcp-sasint.co.uk www.hcp-sasint.co.uk